

Windrush Lane

Rappahannock County

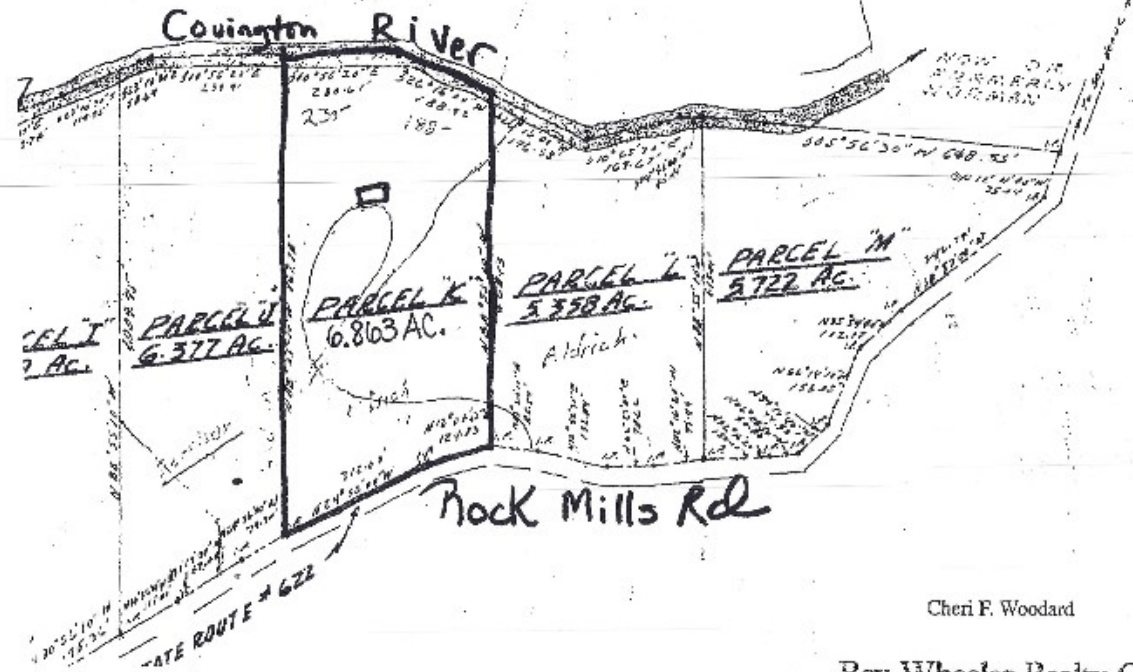


This serene retreat is the ideal haven for those seeking refuge from a city life. The 7+/- acre property is very diverse for a relatively small parcel. It includes dramatic frontage on the Covington River, a pond, massive rock outcroppings, mature Oaks, Poplars, Dogwoods, Walnuts, lovely natural landscaping and a peaceful ambiance. The home is beautifully sited on a bluff above the river to take advantage of the soothing sights and sounds of the Covington flowing by. There are two bedroom wings, each with its own bath and a large office/guest quarters in the walk out basement. The main level features an open floor plan with the kitchen flowing into a comfortable living/eating/entertaining area, anchored by a delightful screened porch. The front of the house opens on to a natural "patio" area formed by a huge flat rock outcropping and rustically natural stone walls, steps and plantings. The property's sense of seclusion belies its easy access and convenience to Washington D.C.



This information is believed accurate but not guaranteed.

Tax Map 40A-1-K-



Cheri F. Woodard

Roy Wheeler Realty Co.

300 Main Street, P.O. Box 570 Sperryville, VA 22760
Office (540) 987-8500 Mobile (540) 728-1738
Fax: (540) 987-8514 Home Office (540) 987-9080
e-mail: cheri@cheriwoodard.com

\$395,000

Martin or Cheri Woodard

Office 540-987-8500, Home 540-987-9080

Cheri @cheriwoodard.com

Martin@cheriwoodard.com

37C Main Street, Sperryville, Va 22740

Roy Wheeler Realty Company

**-CELEBRATING OVER 75 YEARS OF TRUST, TRADITION
AND MARKET LEADERSHIP**

